

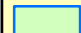
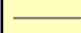


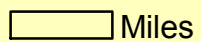
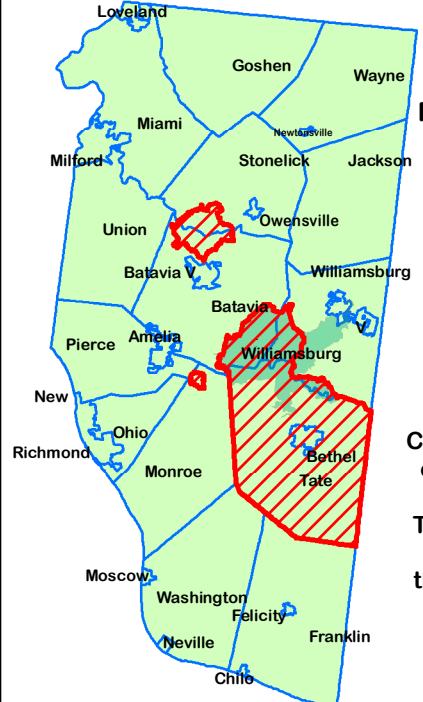
ALB Quarantine
62 square miles
Tate Twp.
East Fork State Park

Portions of:
East Fork Wildlife Area
Monroe Township
Stonelick Township
Batavia Township

Legend

-  Regulated Area
-  East Fork SP/WA
-  Townships
-  Road

5 Miles

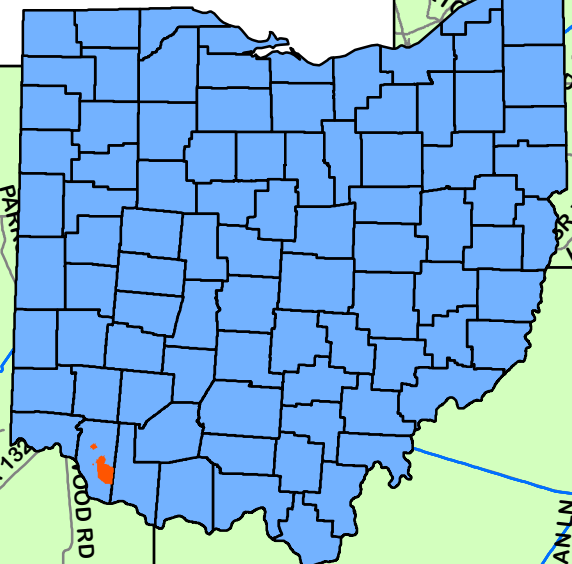



Firewood and other regulated articles are prohibited from leaving the quarantined areas of Clermont County

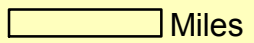
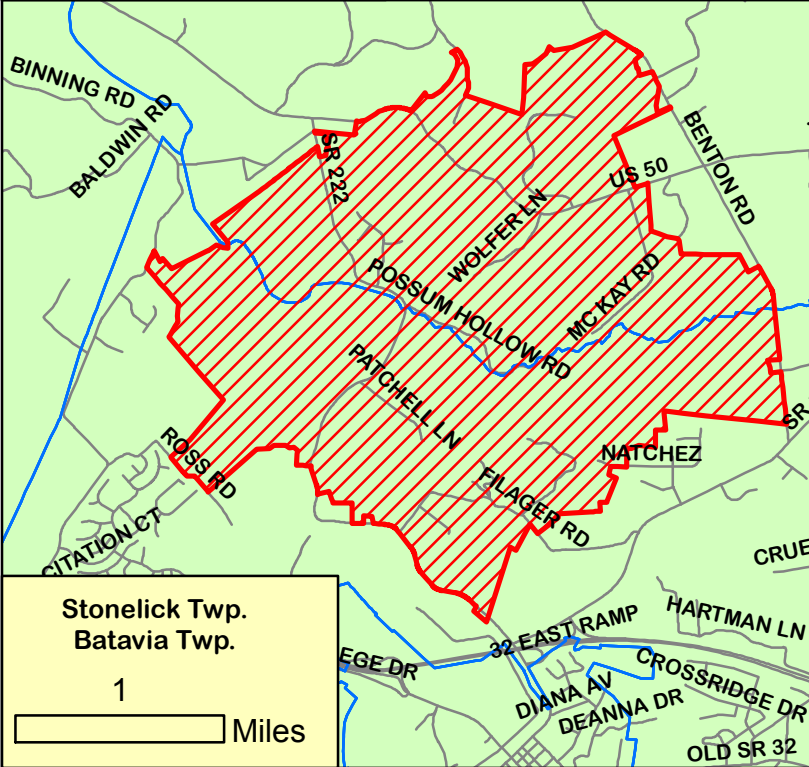
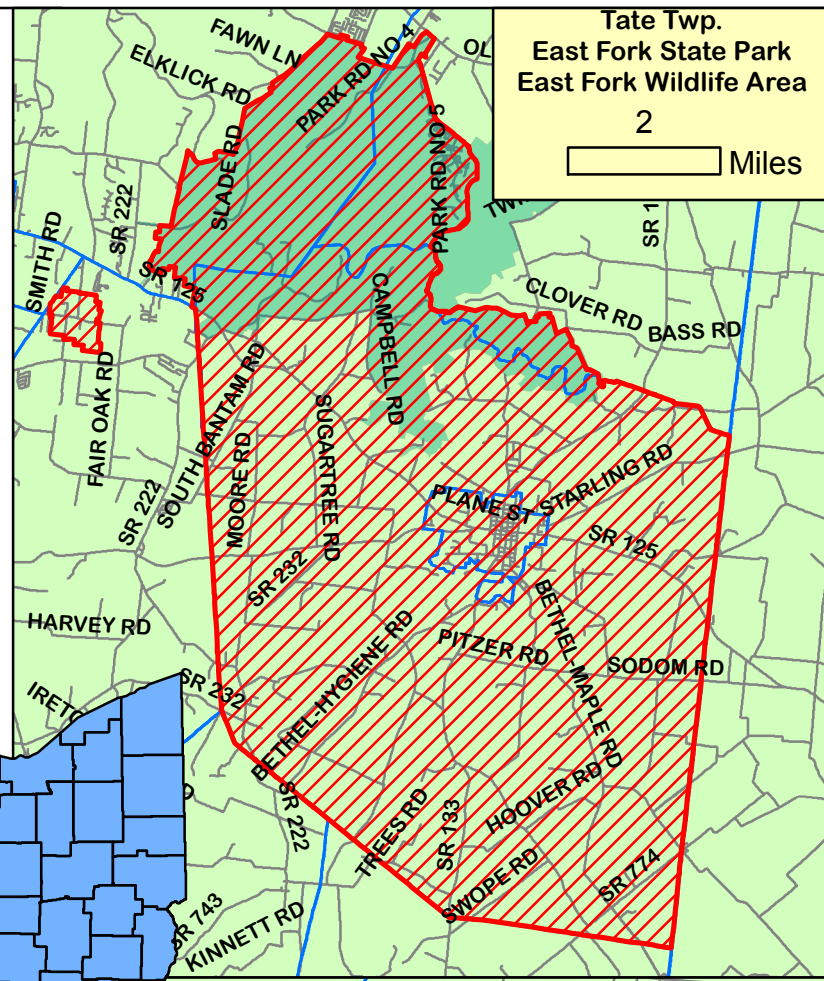


Disclaimer: The Ohio ALB Cooperative Eradication Program collected the data displayed for internal agency purposes only. This data may be used by others; however, they must be used for their original intended purposes.

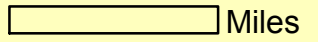
June 2017



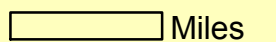
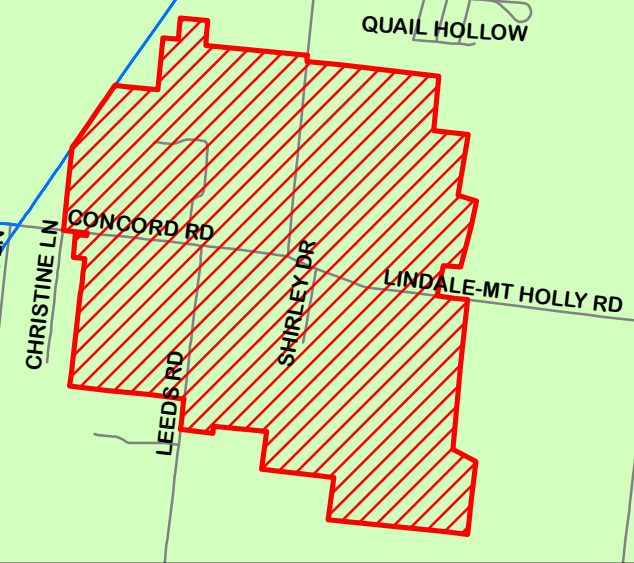
Tate Twp.
East Fork State Park
East Fork Wildlife Area
2 Miles

Stonelick Twp.
Batavia Twp.
1 Miles

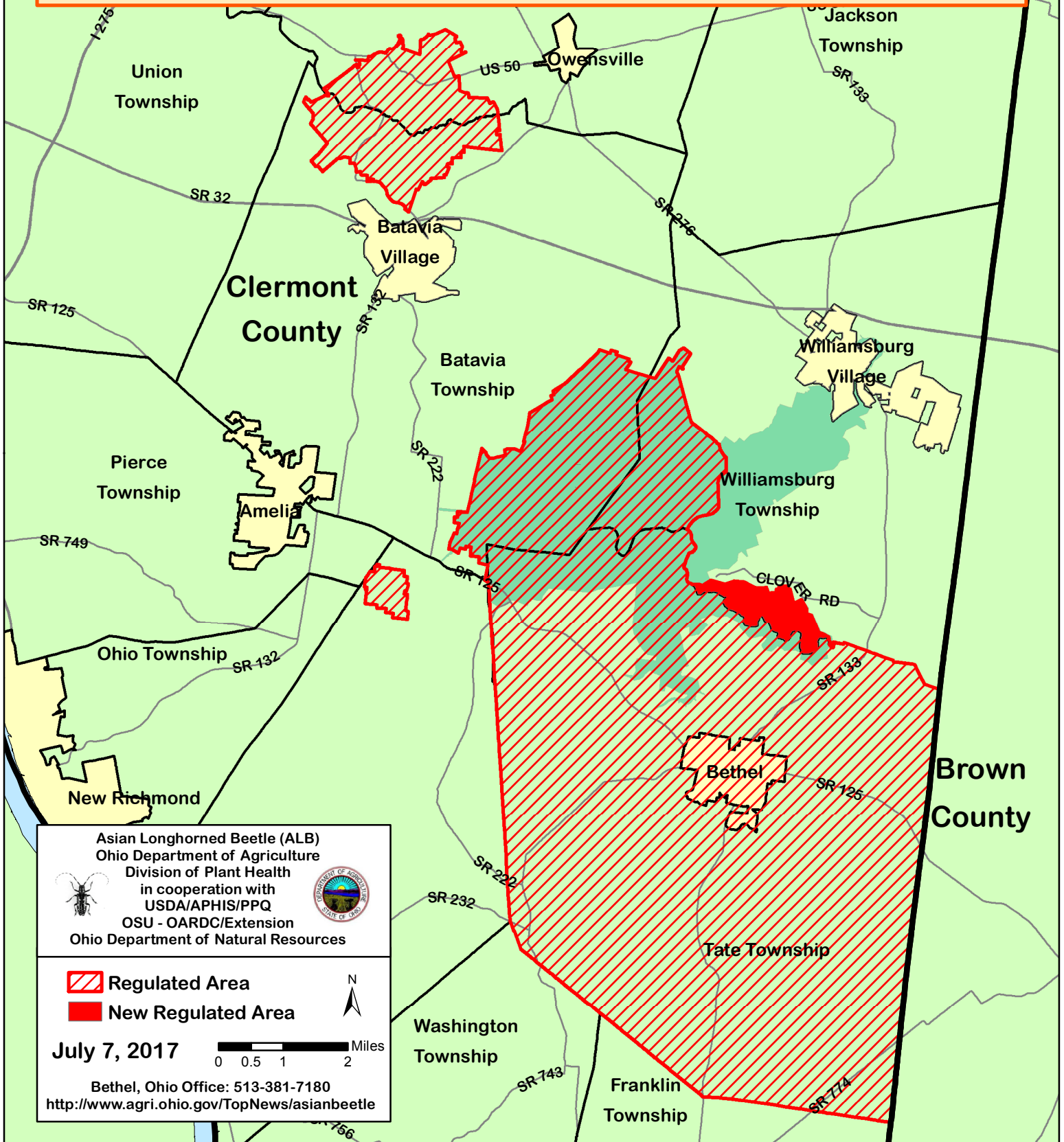


Monroe Twp.
0.25 Miles

Ohio's Asian Longhorned Beetle Quarantine

Firewood and other regulated articles are prohibited from leaving the quarantined areas of Clermont County, which includes all of Tate Township, East Fork State Park, and the Regulated areas of East Fork Wildlife Area, Monroe, Batavia, and Stonelick Townships.



Asian Longhorned Beetle (ALB)
Ohio Department of Agriculture
Division of Plant Health
in cooperation with
USDA/APHIS/PPQ
OSU - OARDC/Extension
Ohio Department of Natural Resources



 Regulated Area

 New Regulated Area



July 7, 2017

0 0.5 1 2 Miles

Bethel, Ohio Office: 513-381-7180
<http://www.agri.ohio.gov/TopNews/asianbeetle>